

## INSPECTION REPORT

We, CISS GROUP, as \_\_\_\_\_ approved superintendents, have provided the following inspection.

Date of inspection: 2020-02-05

Place of inspection: China

Cargo: Oil

From Container No.: CMAU2079210 / Flexitank No.: BWH2007002-2-320FV099

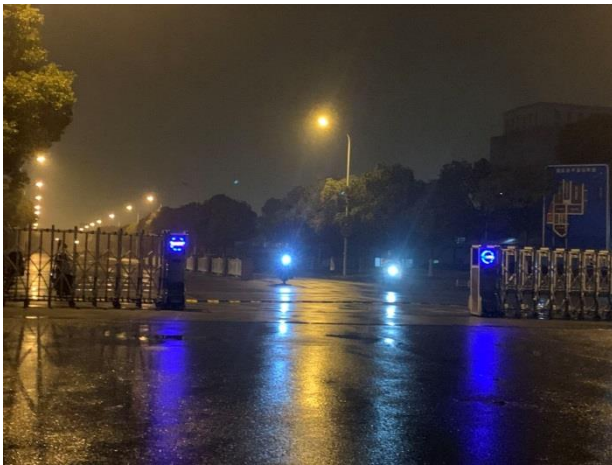
To Container No.: N/A

Time Log	
Time	Contents
19:30	Inspector arrived at site
19:32-20:40	Check container and investigation of place of oil leaks
20:41-20:45	Oil spills places from the both corner at bottom on the container walls has been observed
20:46-20:49	Reach the operation position
20:50-20:53	Operators start work and open the door of container
20:54-20:57	Check inner of the container and FOOD LABEL filling in and attached on walls
20:58-21:00	Connection of hoses and pump for cargo transfer operation
21:01-21:03	Commencement of cargo transfer operations, pump is turned on
21:04-21:15	About 30% of cargo were transferred
21:16-21:20	About 50% of cargo transferred
21:20-21:25	About 80% of cargo transferred
21:25-21:30	End of transferred and pump is switched off
21:30-21:35	Pipes disconnected
21:35-21:40	Oil bag take out from container and lifted off the ground in order to ensure all of oil flow to out
21:40-21:45	Check inner of the container again and oil spots has been observed at the bottom
21:45-21:50	Weighing trucks and container
21:50-22:30	Finding position of the leak and found the open at edge of the plastic bag
22:35	Finished work and leave the site

### Conclusion:

1. The inspection shows that the container and cargo require immediate attention due to oil leakage from the flexitank and traces of oil.
2. Necessary measures were taken to resolve the issue and the oil was transferred from the container.

**Photo Record**



**Gate**



**Truck view**



**Container view on truck**



**Investigation of place of oil leaks at container**



**Check the container**



**Seal View**

**Commodities International Shipping and Survey**





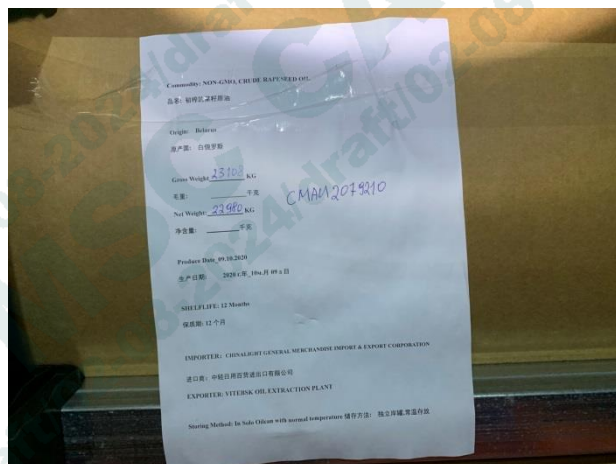
Seal Number



Open the door



FOOD LABEL attached on walls



FOOD LABEL attached on walls



Connection of hoses and pump

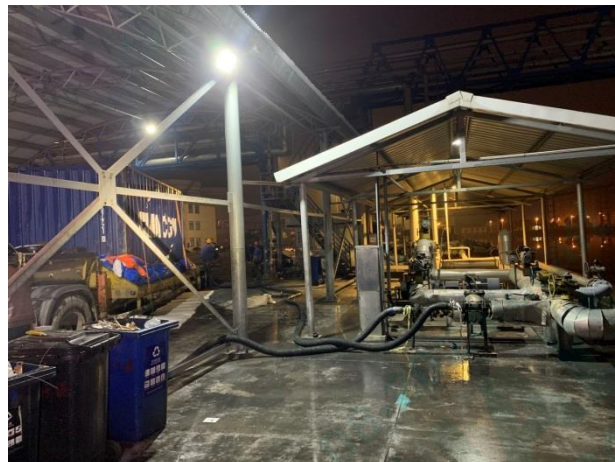


Connection of hoses and pump





Check inner of the container



Commencement of cargo transfer operations,  
pump is turned on



About 30% of cargo were transferred



About 50% of cargo transferred



About 80% of cargo transferred



Oil bag take out from container and lifted off the



	<p>ground</p> 
<p>transferred</p> 	<p>100% of cargo transferred</p> 
<p>Oil spills places of container</p> 	<p>Oil spills places of container</p> 
<p>Oil spills places of container</p>	<p>Oil spills places of container</p>





Oil spills places of container



Oil spills places of container



Oil spills places of container



Oil spills places of container



Weighing trucks and container



Weighing trucks and container

# 上海市粮食储运公司外高桥分公司

LYCC-JL1S18

粮食计量单

称量时间 2021-02-05 称量单号 MC2131719 单位: Kg. 包

仓库	仓位		
作业单号	TASK210206151274		品种明细 毛粟赤
米种代码	通知单号		
批次	磅房	2号磅	车牌号 沪EL1076
客户名称	中经日用百货		
车船号	集装箱	计量包数	
含毛车重	37,940	不含毛车重	20,020
车重	17,920	袋重	0
出箱包数	打印时间 2021-02-05 22:01:06		
包装性质	包装种类	品种	包数 袋重
	客户袋数	散单	0
	计量袋数		
	不计量袋数		
集装箱号	箱封号		

KLP

CMA

$$\begin{array}{r} 37940 \\ 18240 \\ \hline 19700 \end{array}$$

Weighing trucks and container  
(the net weight including the steel pipe and oil  
bag)

The net weight of oil was calculated as :  
 $37940 - 19700 = 18240 \text{ kg}$



### Finding position of the leak



Found the open at edge of the plastic bag

